



US DRAFT CO.

A Division of R.M. Manifold Group, Inc.

CB-EX

Chimney Fan



Application

Gas vents serving Cat I, II, III & IV appliance
Chimneys serving gas burning fireplaces

Performance

Maximum capacity up to 2000 CFM and up to 2.5" w.c. of static pressure

Listings and Ratings

UL378, Standard for Draft Equipment
UL705, Standard for Power Ventilators
Listed up to 575°F for continuous operation
Listed up to 750°F for intermittent operation

Warranty

Two year mechanical warranty

Ordering Matrix

CBXX-AA-EX
XX = size - 7, 13, 22
AA = material - S3* (430 SS), S6 (316L SS)
* non-condensing gas appliances only

Description

Model CB chimney fan is ETL listed for all types of heating appliances

Designed to mount outdoors at the termination of chimneys or gas vents to discharge flue gas away from the building.

May be mounted for vertical or sidewall discharge. Provides negative pressure throughout the chimney or gas vent system to ensure safe operation

Drain holes prevent rain from entering chimney or gas vent

Direct drive motor for quiet, belt-free operation

Construction

The housing and dynamically balanced backward inclined (BI) impeller are available in 430 stainless steel or 316L stainless steel

Motor

Electronically commutated 120/208-230VAC, 1Ø totally enclosed air over (TEAO)

Standard Equipment

Three foot flexible conduit

Motor isolation plate

Fan guard

Integrated inlet ring

Four 1/4"-20 or 5/8"-13 by 3/4" studs for mounting to adapter

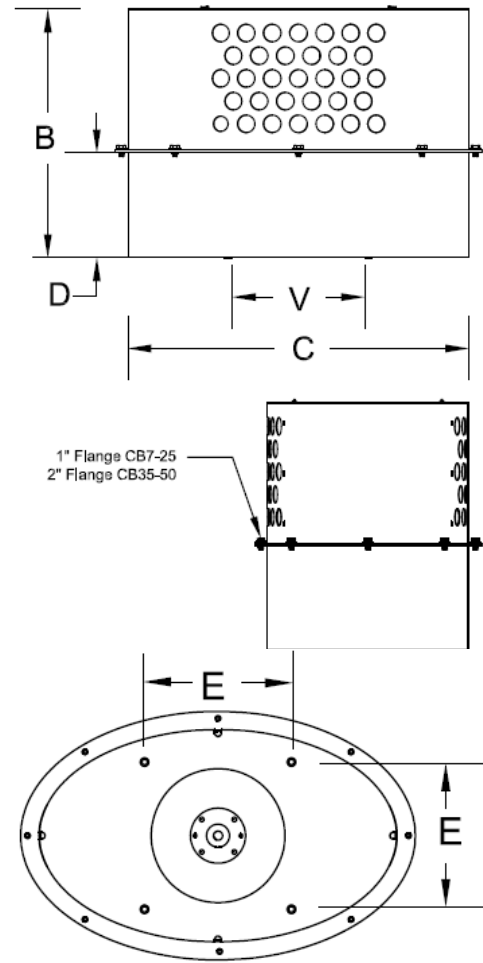
©2016 All rights reserved. Information may be updated without notice. Visit www.usdraftco.com for the most current information

US Draft Co

A Division of RM Manifold Group, Inc
220 S. Sylvania Avenue, Suite 207
Fort Worth, TX 76111
Phone: 817-393-4029
www.usdraftco.com



Dimension Information			
Model	CB7	CB13	CB22
A	13"	15-1/2"	18"
B	12-3/8"	17-3/4"	20-3/4"
C	19-1/2"	23-1/2"	28-1/2"
D	7"	8-1/2"	9-1/2"
E	8"	10"	12"
V	8"	12"	16"
Weight	30 lbs	45 lbs	60 lbs
Voltage	120	120	208-230
Amps	8.1	8.1	6.7
HP	.5	.5	.75
Freq	50/60	50/60	50/60
Phase	1	1	1
RPM	1800	1800	1800
Impeller	BI	BI	BI
Motor	EC	EC	EC



Capacity			
SP	CB7	CB13	CB22
0	640	1200	2040
0.25	590	1120	1900
0.50	525	1020	1750
0.75	450	900	1580
1.00	360	770	1420
1.25	215	620	1250
1.5	—	420	1080
1.75	—	—	900
2.00	—	—	700

©2016 All rights reserved. Information may be updated without notice. Visit www.usdraftco.com for the most current information

US Draft Co

A Division of RM Manifold Group, Inc
 220 S. Sylvania Avenue, Suite 207
 Fort Worth, TX 76111
 Phone: 817-393-4029
www.usdraftco.com

CB-EX Chimney Fan

231CB7-22 EX
 Rev 0816